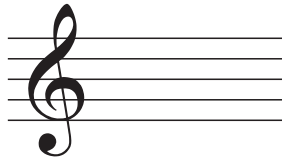


Theory Quiz #3 will be Friday, April 19

A. Make Triads in Inversion

Make a few triads in first or second inversion.



A \flat major
in 2nd inversion

B. Recognize Triads in Inversion

Recognize some triads that are either in root, 1st or 2nd inversion.



_____ in _____

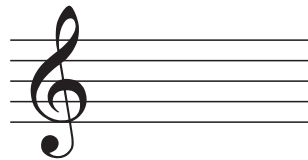
ANSWER



e diminished
in 1st inversion

C. Roman Numerals in Major

Make some triads in a few keys.



E \flat : IV

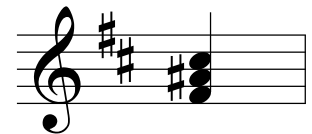
D. Roman Numerals in Minor

These start with a key signature, and you may have to add a sharp or a natural to make the raised leading-tone (for V or vii $^{\circ}$).



b: V

ANSWER



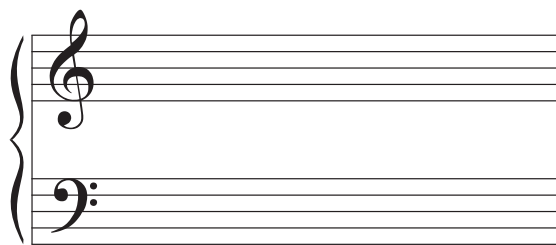
b: V

But wait, there's more...

E. Progressions

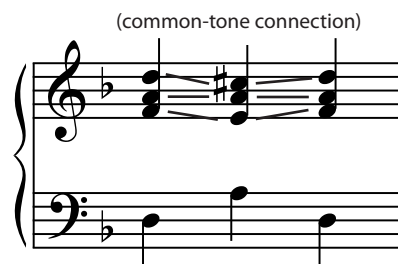
We will do a few of these. Some will be I-V-I type progressions like on worksheets #15 & 16. You'll use the common-tone procedure or the next-closest procedure to connect your chords.

The instructions will say to use a key signature. You will have to raise your leading-tone on some of them.



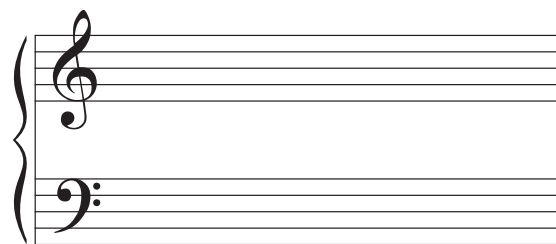
A blank grand staff with treble and bass clefs. Below the staff, the chord progression is written as: d: i V i

ANSWER



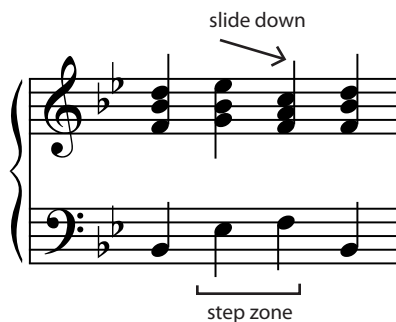
A grand staff showing a common-tone connection for a D major I-V-I progression. The treble clef contains three chords: D major (D-F-A), D major (D-F-A), and D major (D-F-A). The bass clef contains three notes: D, F, and A. An arrow points from the second chord to the third, labeled "(common-tone connection)".

Also, we'll do one or two that have a step zone, like in worksheet #17. Make sure you know what the step zone is and what you are supposed to do.



A blank grand staff with treble and bass clefs. Below the staff, the chord progression is written as: B \flat : I IV V I

ANSWER



A grand staff showing a step zone for a B \flat major I-IV-V-I progression. The treble clef contains four chords: B \flat major (B \flat -D-F), B \flat major (B \flat -D-F), B \flat major (B \flat -D-F), and B \flat major (B \flat -D-F). The bass clef contains four notes: B \flat , D, F, and B \flat . An arrow points from the second chord to the third, labeled "slide down". A bracket under the bass clef notes is labeled "step zone".

Fundamentals

This more advanced stuff starts to get very raggedy if you lose your grip on the fundamentals. You need to be very confident with your scales, key signatures, and triads. I recommend some review with an app (like tonesavvy.com or tenuto) and maybe the extra credit worksheets that I've given you.