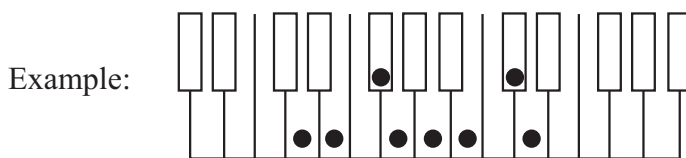


# Creating Major Scales II

(same worksheet, different scales)

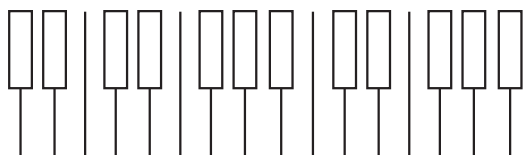
## Part I: Using a piano keyboard

Draw dots on these piano keyboards to show where the notes in the scale would fall.



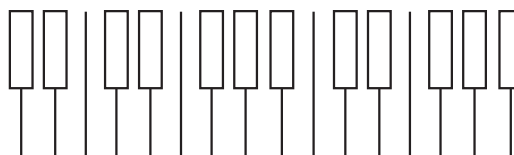
D major

1)



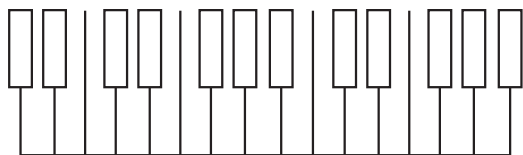
E-flat major

2)



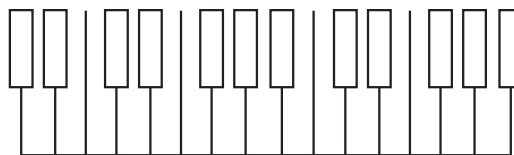
B major

3)



F major

4)



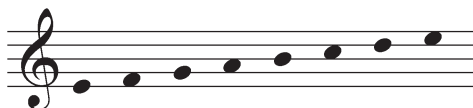
F-sharp major

## Part II: Using the staff, treble and bass clefs

Add accidentals to these notes so that they spell the requested scale.

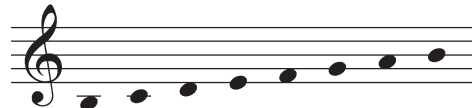
(Remember that accidentals go *before* the notes on the staff, not after.)

1)



E major

2)



B-flat major

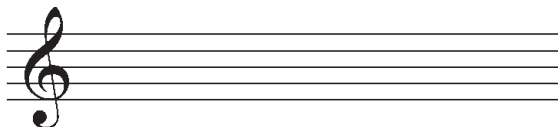
3)



A-flat major

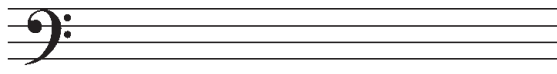
Now create the requested scale in these empty staves.

5)



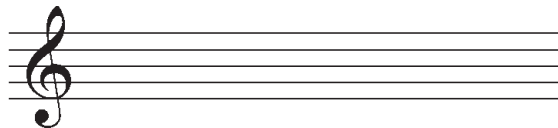
G major

6)



D-flat major

7)



D major

8)



A major

### Part III: Spelling scales with letter names

Spell out the requested scales with letter names.

Example: B $\flat$  major

B $\flat$  C D E $\flat$  F G A B $\flat$

1) F major

2) G-flat major

3) E major

4) A-flat major